

St. Cecilia Catholic School

School Day Hours and Carpool Times

School Day Hours

- On regular dismissal days, the instructional day will be 7:55AM-3:25PM.
- On early dismissal days, the instructional day will be 7:55AM-12:00PM.

Oldest and Only Dismissal Times

- Oldest and Only dismissal for PK3-Kindergarten will begin at 3:05PM on regular dismissal days.
- Oldest and Only dismissal for PK3-Kindergarten will begin at 11:40AM on early dismissal days.

Morning Drop-Off Times

- Early drop-off (available for all students) is from 7:00AM to 7:30AM in the front HOV parking lot.
- HOV Carpool begins at 7:35AM in the front HOV parking lot.
- HOV tags must be displayed in order to drop off after 7:35AM in the front HOV parking lot.
- Non-HOV Carpool begins at 7:35AM in the main Church parking lot.
- At 7:55AM, all cars not in the parking lot will be sent to the front office for a tardy slip.
- Oldest and Only arrival for only PK3 is at 7:55AM to 8:00AM on all days.

Morning Drop-Off - Early Arrival and HOV

Early Arrival is at 7:00AM.

Any students (not just HOV) can be dropped off during the Early Arrival time.

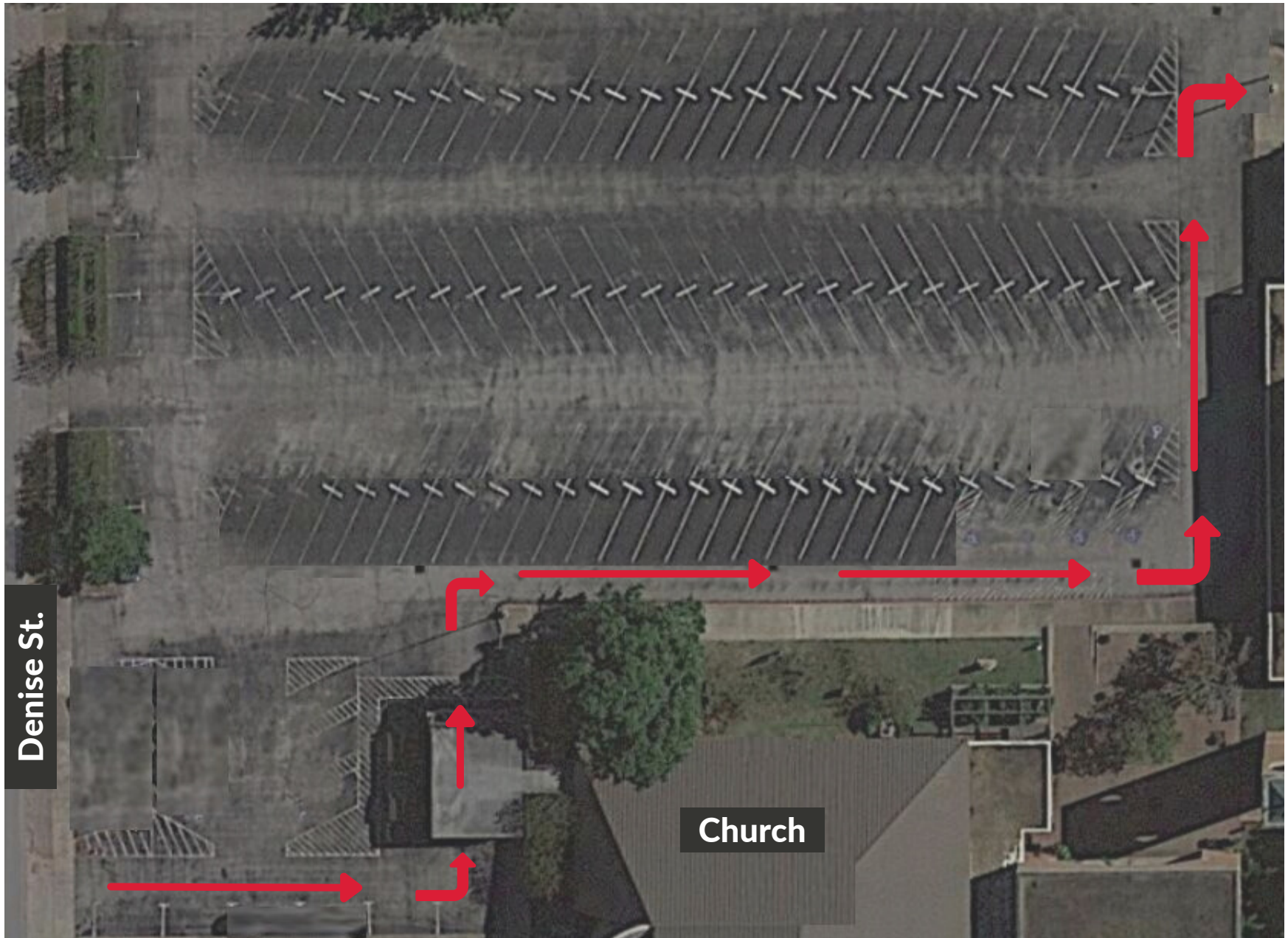
HOV begins at 7:35AM for HOV families only.

All cars enter from Joan of Arc St., and follow the red arrows to drop off and depart.



Morning Drop-Off - Main Church Parking Lot

All cars enter from Bunker Hill Rd. to Denise St. Please turn right at the first entry. Please do not come down Denise St. from the other direction. Follow the red arrows to drop off and leave the parking lot.



Afternoon Pickup - HOV ONLY

Afternoon pickup for HOV, is reserved for those families only who have HOV carpool.

All cars enter from Joan of Arc St., from the direction shown, and follow the red arrows to pick up and depart.



Afternoon Pickup - Instructions / Map Legend

Main Church / Community Center Parking Lot

PK3, PK4, and Kindergarten (Oldest and Only)- Navy Blue Arrows on the Map (please see next page)

- All cars enter from Denise St. where marked on the map, and follow the navy blue arrows toward the Community Center. Follow the white arrows for pickup area, and departure.

All Remaining Grades - Red Arrows on the Map (please see next page)

- All cars enter the parking lot from Joan of Arc St. where marked on the map. Depending upon arrival time, please line up in rows of 10 cars starting closest to the fence.
- Please note, there are multiple lines that head toward Denise St., and then make a U-Turn back toward the Community Center. Please wait for the carpool monitor's instructions and when to proceed. Follow the white arrows for pickup area, and departure.

Afternoon Pickup - Map - Main Church / Community Center Parking Lot

